

FARM INFORMATION SHEET



Farm Caberfeidh
Location Hakataramea Valley, Milne Road, Kurow

Property Description:

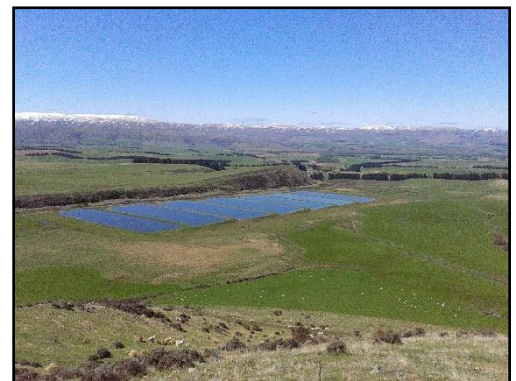
Size (ha): Caberfeidh is 5,980 ha (5,300ha effective)

Farm details:

Caberfeidh is a sheep and beef breeding and finishing operation running 30,000su of mainly Headwaters ewes and Angus cattle.

Description of farm:

- The farm is split into 3 blocks – Boys, Broadacres and Cliffside.
- There are approximately 400 paddocks on Caberfeidh ranging in size from 5ha – 20ha, there are also 5 hill blocks covering approx. 1350ha in total.
- Irrigation is located on all 3 blocks (450ha) – pivot on Broadacres and Boys and K-Line and Roto rainers on Cliffside.
- The farm has 820ha of Lucerne and 1180ha Lucerne mix for grazing, 200ha chicory for lamb finishing, 200ha of winter Brassica, 1600ha of ryegrass and brown top, 1300ha of hill.
- Water supply is available to most paddocks through a number of reticulated trough systems.
- We have 4 woolsheds, 6 sets of sheep yards and 4 sets of cattle yards.
- Caberfeidh direct drill all arable land (except when breaking in new ground).
- Silage and hay harvesting is completed by a contractor.



Farm Policies

- The property runs Headwaters sheep (16,000 ewes) and is consistently achieving 155% lambing with an average lamb weaning weight of 30kg lwt. Hogget lambing occurs when the seasons allow.
- All lambs are sold prime at 17 to 18kg carcass weight with Omega lambs finished on Chicory pastures for Te Mana lamb brand and the balance finished on Lucerne.
- 400 Angus cows are achieving 90% calving with an average calf weaning weight of 230kg.
- All dry cattle are sold prime at 18 months.
- Given a favourable season, the trading component may comprise up to 20,000 lambs and 1,000 cattle.



Staff

Farm Manager, Block Managers, Ag Operations Manager, Tractor Driver, Experienced Shepherds, Shepherds, General Farm Hand, and Farm General/Fencer.

Accommodation

To be confirmed at later stage.

Remuneration Package

Salary range: competitive market rate depending on skills and experience

Plus:

- Lone Star Farms pays an Accommodation allowance to cover your weekly rent. Rent is deducted at \$50-100/week (*depending on living arrangements i.e. single or couple/family*) and is deducted fortnightly from your salary;
- Electricity;
- A cell phone is provided for work use only;
- Wet weather gear/protective clothing to be provided by LSF up to the value of \$500 per year;
- Farm vehicle (work use only);
- Dog expenses (including vet costs of up to \$350/dog/yr.) met by LSF for up to 4 working dogs.
- Firewood available;
- Sheep meat (1/month).

Employment start date: to be confirmed

Further Details:

Expectations for working weekends and public holidays

Lone Star Farms believes that with good planning, organisation and completion of farm work during the week, weekend work including any public holidays, should be required for essential tasks only and can be shared equally between the team.

The Farm Manager is asked to ensure stock activities are well organised to ensure all staff, themselves included, can have the opportunity to take these days off.

It is understood however, that from time to time, it may be necessary to work on a public holiday, and staff will be compensated as per the Employment Relations Act.

Further up-skilling and training opportunities

Further learning and training is encouraged and supported by Lone Star Farms (with course fees shared) and we run a number of on-farm training sessions. Given the nature of our farming operation there are significant skills and learning to be gained from this farm.

Distance to town

Kurow is 10 minutes from the farm and has a Medical Centre, petrol stations, post office, dairy, 4-Square supermarket, bakery and 2 hotels.

Oamaru is 50 minutes to the south-east and has all the amenities, (i.e.: doctors, supermarkets, cafes, dentist etc., as well as a range for retail shopping).

Local community and sports activities

There is a number of activities staff members can be involved in. Some of which include;

- Trout fishing in the Hakataramea River.
- Kirkliston hunting blocks (wallaby's, red deer and chamois).
- Ohau ski field.
- The lakes are only 30 minutes away (Aviemore and Benmore).
- Kurow Rugby, Golf and Squash Club.

Schools

- Waitaki Valley Primary School – bus pick up at the gate at 8am.
- Secondary schooling in Oamaru – bus leaves from Kurow 25km from the farm at 7.30am.

